

M16 x 2.0 THREAD x 1.25 DEEP
C'BORE DIA .670 x .320 DEEP

PRECISION GROUND
FOR DUAL CONTACT FIT

Ø 2.48

Ø 1.75

Ø 1.97

ER32 COLLET NUT

.645

2.58

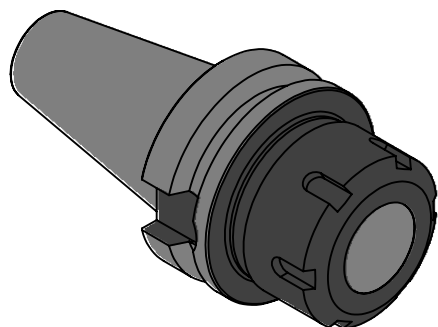
0

.04

1.06

1.35

2.36



NOTES:
WORKS ON ALL BT40 MACHINES WITH DUAL CONTACT SPINDLES
COMPATIBLE WITH BIG-PLUS® SPINDLES
TAKES ALL ER32 COLLETS FROM .039"-.875"
USES WRENCH PART # ER32-WRENCH (NOT INCLUDED)
FOR MORE PRODUCT DETAILS PLEASE GO TO MARITOO.COM
AND SEARCH ITEM # LISTED ON THIS PRINT

MARITOO

WWW.MARITOO.COM

ITEM#

BT40 ER32-60D

Made in USA